



Completion of *Hosho-an* - 1967
 Building area - 121 m²
 Premise area - 843 m²

屋根 Yane - Roof

The roof is made of strips of Cypress bark, and the angle of inclination has been built asymmetrically in order to depict a beautiful mountain ridge.

What to look for

koma - Small tearoom

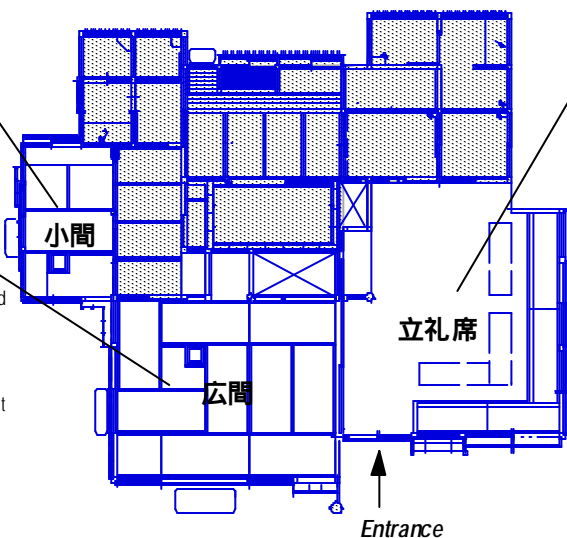
The ceiling over host and guest are built in different styles in order to maintain asymmetry.

Hiroma - Large tearoom

Built as part of the International Conference Hall facilities, the *Hosho-an* teahouse is designed to be more open and spacious than others.

Enjoying the refined flavor of fine Japanese tea becomes all the more refreshing when the paper *shoji* doors are opened to let in the bright sunlight and fresh air.

The beautiful and renowned *Kitayama* Cedars of Northern Kyoto are used for the ceiling.



Ryureiseki -

A style utilizing tables & chairs, unlike the traditional tatami mats.

The ceiling is made of Cedar, and the thick log used for the above post gives a sense of strength and stability.

Glancing down at the ground reveals a floor made of rough *Shigaraki* ceramic tiles. Although this type of usage appears in many teahouses since, the *Hosho-an* was first to utilize this style.

Tea here in the large room may be enjoyed without the removal of shoes, at bench and table.

It is possible to use the *Ryureiseki* and *Hiroma* as one spacious room with the removal of two *fusuma* paper sliding doors.