

# 宝松庵

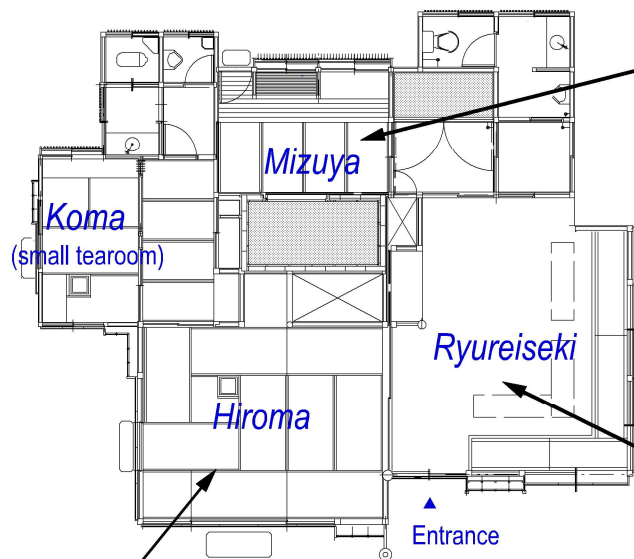
## The Hoshō-an Teahouse



With the view of a sparkling Lake Takaragaike, stepping upon the path to the teahouse, The sight of the Cypress bark roof appears before us.

Sakura Cherry blossoms in spring, Momiji Maple leaves in autumn, The unfolding beauty of the four seasons is fully showed off by the vast Japanese gardens.

Use the Hoshō-an as a place to encounter authentic Japanese culture, and enjoy a moment of serenity and relaxation during academic conferences and conventions.



Mizuya - Preparation room.



Ryureiseki - Tea ceremony with bench and table. (Seats approx. 12~15 guests) [25m<sup>2</sup>]



Hiroma - Large tearoom (Seats approx. 13~15 guests) [19m<sup>2</sup>]

The adjoining Hiroma & Ryurei are divided by 2 removable fusuma sliding paper doors, and may also be used as separate tearooms.



Nodateseki - Enjoy tea outside. [280m<sup>2</sup>]

### Basic Weekday fees ( tax included )

	Weekdays	Weekends&Holidays
Tea room	JPY 39,600	JPY 47,520

- ※ Room rental fees for weekends, holidays, and substitute holidays are charged 20% more of the weekday's.
- ※ The fee for using garden(Nodateseki) is included on the price list above.
- ※ In case of using tea room for other functions,additional cost of 50% is required.
- ※ Tea utensils are not for rent.(Prep.room tools and a few tea bowls could be an exception).
- ※ Please feel free to contact us regarding general tea ceremony service.

For further information, contact the  
 Kyoto International Conference Center Hoshō-an Management Staff  
 KYOTO INTERNATIONAL CONFERENCE CENTER  
 Email : booking@icckyo.or.jp <https://www.icckyo.or.jp/>