

# Internet Service Explanation

---

**CONTENTS**

---

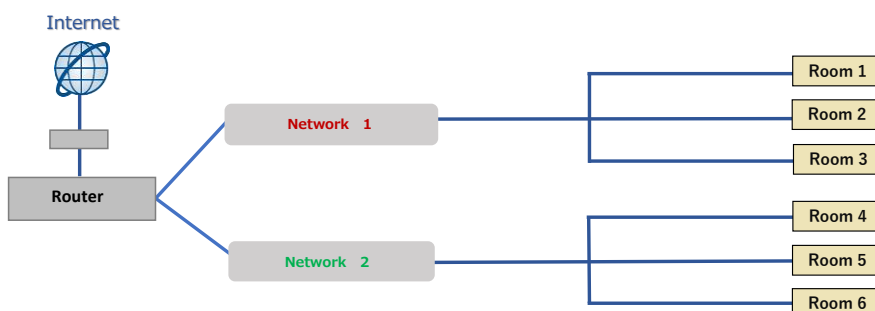
- 01. Permanent Optic Connection (Shared Connection)**
  - 02. Permanent Optic Connection (Dedicated Connection)**
  - 03. Temporary Optic Connection (Dedicated Connection)**
  - 04. Access Points (Wireless LAN)**
  - 05. WiFi (Wireless LAN) Plan for Annex Hall/Event Hall/New Hall**
  - 06. Temporary High Speed Optic Line (Guaranteed Bandwidth Connection)**
- Free WiFi (Permanent Wireless LAN) ----
-

## 01. Permanent Optic Connection (Shared Connection)

This service bundles multiple locations into one line.

The maximum communication speed is 100 Mbps – 1 Gbps (download speed).

		Remarks
LAN cable wiring fee (For 1st line)	22,000 yen / line	Supports network partition
LAN cable wiring fee (For 2nd line and after)	11,000 yen / line	Excluding branching within the same room and connections to the exhibition booths



①	line : NTT	Provider : AsahiNet
②	line : ARTERIA	Provider : SINET6
③	line : NTT	Provider : OCN
④	line : NTT	Provider : Plala

Applicants cannot designate preferred connection providers.

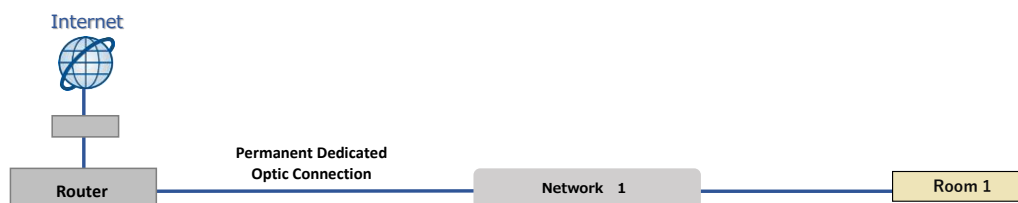
- Maximum communication speed is based on technical specifications and does not signify effective speed.
- This service is offered on a best-effort basis, and communication speed and quality are not guaranteed.  
Actual communication speeds vary depending on network usage conditions, etc.
- DHCP is distributed via existing routers in the building.
- ICC Kyoto assumes no responsibility whatsoever for any quality loss in communications due to the fault of the telecommunications carrier.
- In order to maintain quality of communications, cable installation, etc. at ICC Kyoto must be carried out by ICC Kyoto's designated contractor.
- If you wish to use a global IP, please consult with the staff in charge.
- It is also possible to use this service as an in-house LAN using the network installed in ICC Kyoto, without external connection.
- Personnel expenses for operation and maintenance staff may be required when SSID and password settings are changed.
- Applicants cannot designate preferred connection providers.

## 02. Permanent Optic Connection (Dedicated Connection)

The dedicated permanent optic connection has an a maximum download speed of approximately 1 Gbps.

		Remarks
Permanent Optic Connection	66,000 yen / line	Provider · router included

\*Separate LAN cable wiring fee (22,000 yen per line) is required.



- Maximum communication speed is based on technical specifications and does not signify effective speed.
- This service is offered on a best-effort basis, and communication speed and quality are not guaranteed. Actual communication speeds vary depending on network usage conditions, etc.
- There are a limited number of lines, so please consult with the staff in charge regarding exclusive use of the dedicated permanent optic connection.
- ICC Kyoto assumes no responsibility whatsoever for any quality loss in communications due to the fault of the telecommunications
- The service fee will not change even if a portion of services are handled by the organizer. In order to maintain the quality of communications, all construction work including cable connection to the end terminals of cables installed by ICC Kyoto must be carried out by ICC Kyoto's designated contractor.
- Please consult with the staff in charge regarding use of a global IP.

## 03. Temporary Optic Connection (Dedicated Connection)

A temporary optic connection enables connection to the Internet via FLET'S HIKARI NEXT from NTT WEST, with a maximum download speed of approximately 1 Gbps.

Business lines provide faster and more stable connections than family lines.

Applications for temporary optic connections (business or family) must be submitted at least 1 month in advance.

		Remarks
Optic line setup fee - Family connection	139,150 yen ~	Provider · router included
Optic line setup fee - Business connection	286,000 yen ~	Provider · router included
Adjuster switch installation · setup fee	41,250 yen ~	When 5+ lines are required
*Separate LAN cable wiring fee is required	22,000 yen ~	—

- Maximum communication speed is based on technical specifications and does not signify effective speed.
- This service is offered on a best-effort basis, and communication speed and quality are not guaranteed. Actual communication speeds vary depending on network usage conditions, etc.
- ICC Kyoto assumes no responsibility whatsoever for any quality loss in communications due to the fault of the telecommunications carrier.
- The service fee will not change even if a portion of services are handled by the organizer. In order to maintain the quality of communications, all construction work including cable connection to the end terminals of cables installed by ICC Kyoto must be carried out by ICC Kyoto's designated contractor.
- Please consult with the staff in charge regarding use of a global IP.

## 04. Access Points (Wireless LAN)

It is possible to increase the number of access points for the wireless LAN connection.

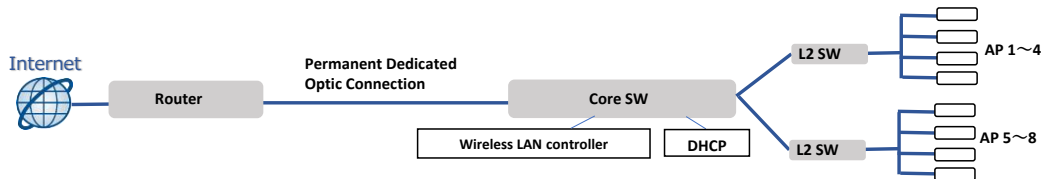
		Remarks
WiFi	33,000 yen / AP	<b>Supports network partitioning</b> <b>1 port · 1 VLAN only</b> <b>SSID &amp; PW can be set</b>

- This service is offered on a best-effort basis, and there is no guarantee of communication speed.  
High access volume may result in decreased communication speed or difficulty connecting.
- DHCP is distributed via existing routers in the building.
- ICC Kyoto assumes no responsibility whatsoever for any quality loss in communications due to the fault of the telecommunications carrier.
- In order to maintain the quality of communications, cable installation, etc. at ICC Kyoto must be carried out by ICC Kyoto's designated contractor.
- It is also possible to use this service as an in-house LAN using the network installed in ICC Kyoto, without external connection.
- Personnel expenses for operation and maintenance staff may be required when SSID and password settings are changed.
- Applicants cannot designate preferred connection providers.

## 05. WiFi (Wireless LAN) Plan for Annex Hall/Event Hall/New Hall

A package plan for wireless internet is available for use in the Annex Hall, Event Hall, and New Hall.

		Remarks
High Data Volume Plan (8 access points)	495,000 yen	<b>Connection for approx. 500 devices</b> <b>Includes cost of permanent internet connection and server fees</b> <b>Possible to set designated SSID/password</b>



- This service is offered on a best-effort basis, and communication speed and quality are not guaranteed.  
Actual communication speeds vary depending on network usage conditions, etc.
- DHCP is allocated using existing routers in the building.
- ICC Kyoto assumes no responsibility whatsoever for any quality loss in communications due to the fault of the telecommunications carrier.
- In order to maintain the quality of communications, all construction work including cable connection to the end terminals of cables installed by ICC Kyoto must be carried out by ICC Kyoto's designated contractor.
- Designating an SSID/password may incur additional personnel costs for execution and maintenance.
- Applicants cannot designate preferred connection providers.
- Separate fee for technical support is required.

## 06. Temporary High Speed Optic Line (Guaranteed Bandwidth Connection)

The temporary high speed optic line service connects to the Internet with a certain amount of bandwidth guaranteed even during network congestion.

Applications for temporary high speed optic lines must be submitted at least 1 month in advance.

		Remarks
<b>Optic line setup fee (Guaranteed bandwidth connection)</b>	<b>1G 3,080,000 yen</b>	<b>Provider · router included</b>
	<b>2G 3,740,000 yen</b>	
	<b>3G 4,400,000 yen</b>	
	<b>4G 4,950,000 yen</b>	
	<b>5G 5,610,000 yen</b>	
	<b>6G 6,270,000 yen</b>	
	<b>7G 6,930,000 yen</b>	
	<b>8G 7,480,000 yen</b>	
	<b>9G 8,140,000 yen</b>	
	<b>10G 8,800,000 yen</b>	
<b>Adjuster switch installation · setup fee</b>	<b>41,250 yen~</b>	<b>When 5+ lines are required</b>
<b>*Separate LAN cable wiring fee is required</b>	<b>22,000 yen~</b>	—

- Please choose bandwidth from 1G to 10G.  
Actual communication speeds vary depending on network usage conditions, etc.
- ICC Kyoto assumes no responsibility whatsoever for any quality loss in communications due to the fault of the telecommunications
- The service fee will not change even if a portion of services are handled by the organizer. In order to maintain the quality of communications, all construction work including cable connection to the end terminals of cables installed by ICC Kyoto must be carried out by ICC Kyoto's designated contractor.
- Please consult with the staff in charge regarding use of a global IP.

## Free WiFi (Permanent Wireless LAN)

Free wireless Internet service is available inside ICC Kyoto.

In order to ensure that as many people as possible can use the service without interruption, please refrain from data-heavy usage such as software updates, downloading applications, etc.

Area	Entire Center
Standard	IEEE802.11ac
SSID	ICCK_Public_WiFi
PW	No password required

- This service is offered on a best-effort basis, and communication speed and quality are not guaranteed.  
High access volume may cause a drop in communication speed or difficulty connecting.
- The service can be used in all areas where the SSID appears, but it may not be available in areas where the signal does not reach or is too weak.
- Individual users are responsible for maintaining the security of connected devices. ICC Kyoto cannot offer support with regard to device settings and environments.
- ICC Kyoto assumes no responsibility whatsoever for any viruses, intercepted communications, information leakage or loss, unauthorized access, user impersonation, or malfunction, loss, or damage to devices resulting from use of this service.
- ICC Kyoto assumes no responsibility whatsoever for any loss or damage resulting from unexpected service disruptions or complications.
- Please refrain from operations that use the service's capacity for long periods of time, such as sending and receiving large files, as this may inconvenience other users.
- PW and SSID setting changes are only available for events reserving the entirety of the main building.