



Internet Service Explanation

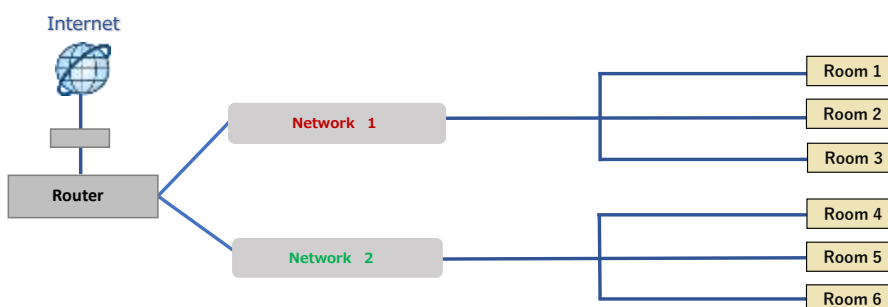
CONTENTS

- 01.** Permanent Optic Connection (Shared Connection)
 - 02.** Permanent Optic Connection (Dedicated Connection)
 - 03.** Temporary Optic Connection (Dedicated Connection)
 - 04.** Temporary High Speed Optic Line (Guaranteed Bandwidth Connection)
 - 05.** Access Points (Wireless LAN)
 - 06.** Permanent Wireless LAN
-

01. Permanent Optic Connection (Shared Connection)

This service bundles multiple locations into one line.
The communication speed is 100 Mbps – 1 Gbps (download speed).

		Remarks
LAN cable wiring fee (For 1st line)	22,000 yen / line	Supports network partition
LAN cable wiring fee (For 2nd line and after)	11,000 yen / line	Except for branching in the same room and connection to the exhibition booth.



①	line : NTT	Provider : AsahiNet
②	line : ARTERIA	Provider : ARTERIA
③	line : NTT	Provider : OCN
④	line : NTT	Provider : SINET5
⑤	line : NURO	Provider : NURO

Applicants cannot designate preferred connection providers.

- This service is offered on a best-effort basis, and communication speed and quality are not guaranteed.
Actual communication speeds vary depending on network usage conditions, etc.
- DHCP is distributed via existing router in the building.
- We assume no responsibility whatsoever for any quality loss in communications due to the fault of the telecommunications carrier.
- In order to maintain quality of communications, cable installation, etc. at ICC Kyoto must be carried out by ICC Kyoto's designated contractor.
- If you wish to use a global IP, please consult the staff in charge.
- It is also possible to use this service as an in-house LAN using the network installed in ICC Kyoto, without external connection.
- Personnel expenses for operation and maintenance staff may be required when SSID and password settings are changed.
- Applicants cannot designate preferred connection providers.

02. Permanent Optic Connection (Dedicated Connection)

Dedicated connection with a 1 Gbps maximum downloaded speed.

		Remarks
Permanent Optic Connection	66,000 yen / line	Provider · router Included Line usage fee (6 lines max.)

*The LAN cable wiring fee (22,000 yen per line) is charged separately.



- This service is offered on a best-effort basis, and communication speed and quality are not guaranteed.
Actual communication speeds vary depending on network usage conditions, etc.
- Events reserving main building can use up to 6 lines.
For events not reserving the main building, consult with an ICC Kyoto representative if permanent optic lines (dedicated connections) are required.
- We assume no responsibility whatsoever for any quality loss in communications due to the fault of the telecommunications carrier.
- Even if users handle some aspects of the service themselves, the fee of the service will not change. In order to maintain quality of communications, all construction work including cable connection to the end terminals of cables installed by ICC Kyoto must be carried out by ICC Kyotor's designated contractor.
- If you wish to use a global IP, please consult the staff in charge.

03. Temporary Optic Connection (Dedicated Connection)

Temporary Optic Connection enables connection to the Internet via the FLET'S HIKARI NEXT from NTT WEST.

Dedicated connection with a 1 Gbps maximum downloaded speed.

Additionally, the business line is actually better at providing a connection that is faster and more constant than a family line. Submit the "Temporary Optic Connection (Business/Family)" application form at least 1 month in advance.

		Remarks
Optic line setup fee, "Family" connection	139,150 yen ~	Provider · router included
Optic line setup fee, "Business" connection	286,000 yen ~	Provider · router included
Adjuster switch installation · setup fee	41,250 yen ~	More than 5 lines are required
*The LAN cable wiring fee is charged separately.	22,000 yen ~	—

- This service is offered on a best-effort basis, and communication speed and quality are not guaranteed.
Actual communication speeds vary depending on network usage conditions, etc.
- Please note that ICC Kyoto takes no responsibility for service quality degradation due to issues with telecommunications carriers.
- Even if users handle some aspects of the service themselves, the fee of the service will not change. In order to maintain quality of communications, all construction work including cable connection to the end terminals of cables installed by ICC Kyoto must be carried out by ICC Kyotor's designated contractor.
- If you wish to use a global IP, please consult the staff in charge.

04. Temporary High Speed Optic Line (Guaranteed Bandwidth Connection)

Temporary High Speed Optic Line service is a service that connects to the Internet with a certain amount of bandwidth guaranteed even during network congestion. "Temporary high speed optic line" application form is at least 1 month in advance.

		Remarks
Optic line setup fee (Guaranteed bandwidth connection)	1G 3,080,000 yen	Provider · router included
	2G 3,740,000 yen	
	3G 4,400,000 yen	
	4G 4,950,000 yen	
	5G 5,610,000 yen	
	6G 6,270,000 yen	
	7G 6,930,000 yen	
	8G 7,480,000 yen	
	9G 8,140,000 yen	
	10G 8,800,000 yen	
Adjuster switch installation · setup fee	41,250 yen~	More than 5 lines are required
The LAN cable wiring fee is charged separately.	22,000 yen~	—

- Please choose bandwidth from 1G to 10G.
Actual communication speeds vary depending on network usage conditions, etc.
- We assume no responsibility whatsoever for any quality loss in communications due to the fault of the telecommunications carrier.
- Even if users handle some aspects of the service themselves, the fee of the service will not change. In order to maintain quality of communications, all construction work including cable connection to the end terminals of cables installed by ICC Kyoto must be carried out by ICC Kyotor's designated contractor.
- If you wish to use a global IP, please consult the staff in charge.

05. Access Points (Wireless LAN)

In addition to permanent optic lines (shared), access point usage is also available.
Approximately 60 devices can connect via 1 access point.

		Remarks
WiFi	33,000 yen / AP	Supports network partitioning 1 port · 1 VLAN only SSID & PW can be set

- This service is offered on a best-effort basis, and communication speed and quality are not guaranteed.
Actual communication speeds vary depending on network usage conditions, etc.
- DHCP is distributed via existing router in the building.
- We are not responsible whatsoever for any quality loss in communications due to the fault of the telecommunications carrier.
- In order to maintain quality of communications, cable installation, etc. at ICC Kyoto must be carried out by ICC Kyoto's designated contractor.
- It is also possible to use this service as an in-house LAN using the network installed in ICC Kyoto, without external connection.
- Personnel expenses for operation and maintenance staff may be required when SSID and password settings are changed.
- Applicants cannot designate preferred connection providers.

06. Permanent Wireless LAN

Free wireless Internet service is available inside ICC Kyoto.

Area	Entire Center
Standard	IEEE802.11ac
SSID	ICCK_Public_WiFi
PW	No password required
No. of devices supported at one time	Approx. 8,400

- Because this is a service provided free of charge, communication speed, etc. cannot be guaranteed.
- The service can be used in all areas where the SSID appears, but it may not be available in areas where the signal does not reach or is too weak. Also, if many guests in the facility are using it at the same time, congestion may cause the communication speed to drop.
- Individual users are responsible for maintaining the security of connected devices. We cannot offer support with regard to device settings and environments.
- We assume no responsibility for any viruses, intercepted communications, information leakage or loss, unauthorized access, user impersonation, or malfunction, loss, or damage to devices resulting from use of this service.
- We assume no responsibility whatsoever for any quality loss in communications due to the fault of the telecommunications carrier.
- Please refrain from operations that use the service's capacity for long periods of time, such as transmission and reception of large files, as this may inconvenience other users.
- PW and SSID setting changes are only available for events reserving the main building.