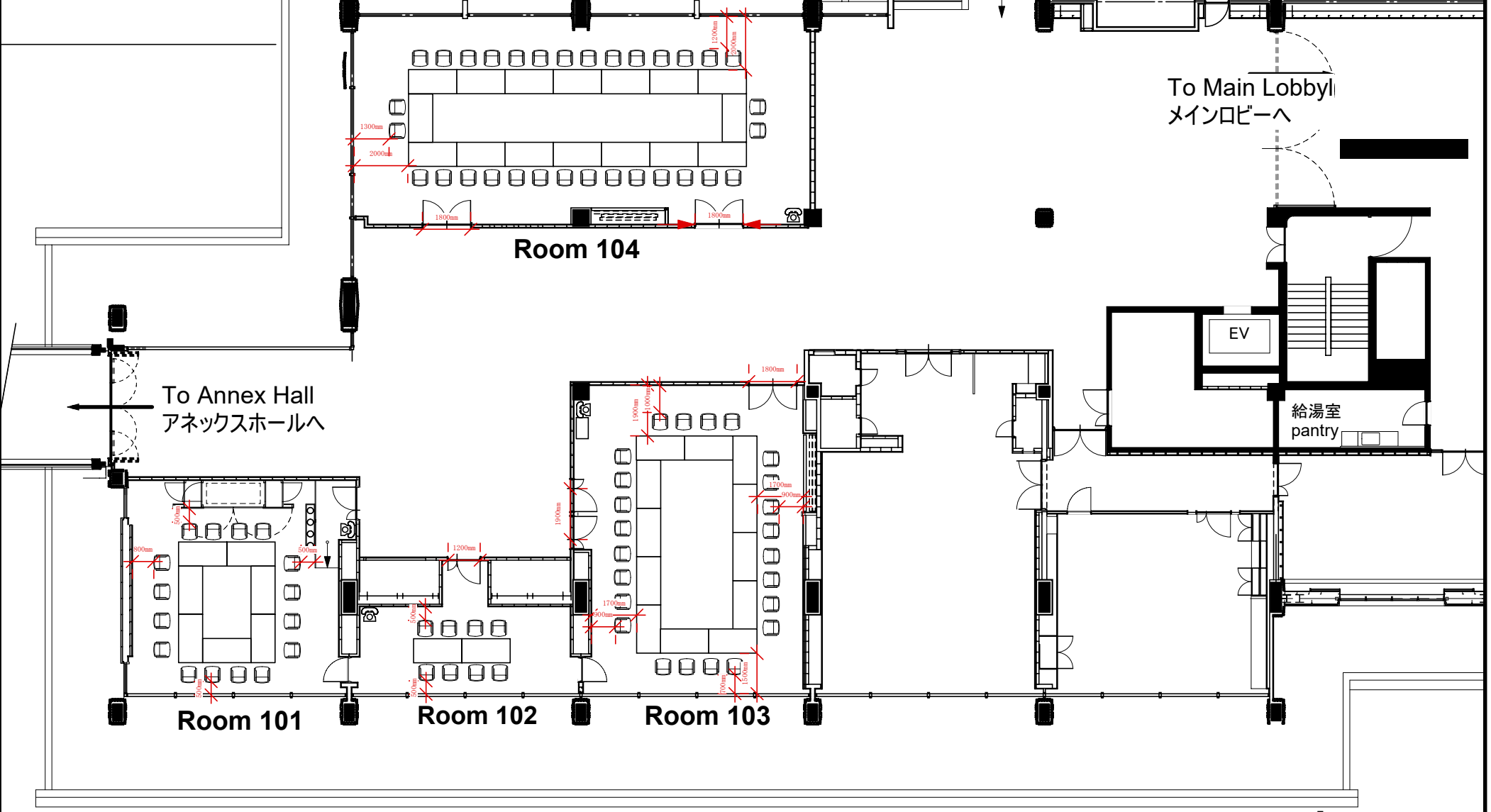


- Room 101 16 Seats (Square Style:W1800mm x D900mm)
- Room 102 8 Seats (Square Style:W1800mm xD900mm)
- Room 103 24 Seats (Square Style:W1800mm xD900mm)
- Room 104 32 Seats (Square Style:W1800mm xD900mm)



To Main Entrancel
正面玄関へ

To Main Lobby
メインロビーへ

To Annex Hall
アネックスホールへ

EV

給湯室
pantry

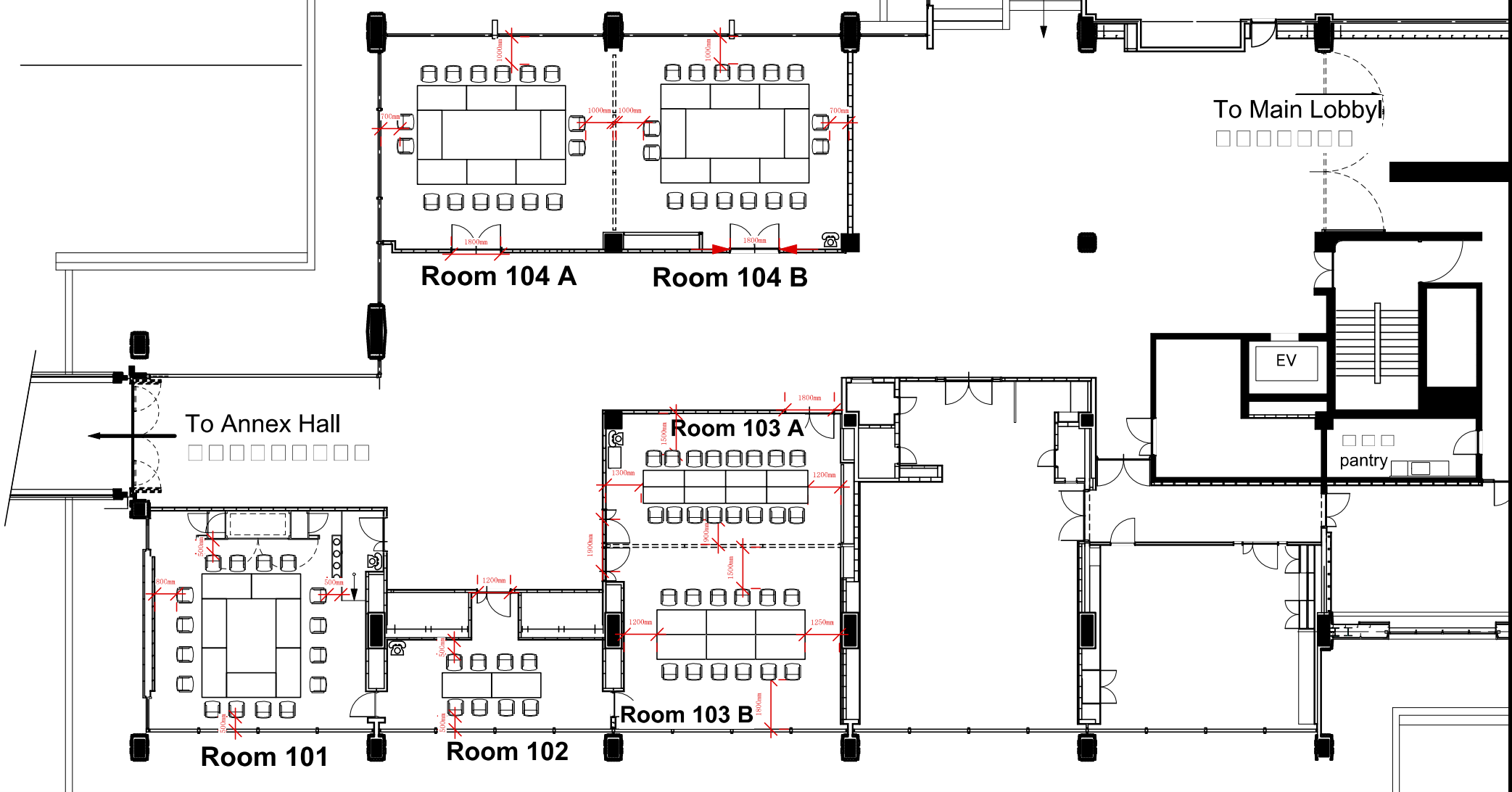
Room 101

Room 102

Room 103

0 5 10

- Room 101 16 Seats (Square Style:W1800mm x D900mm)
- Room 102 8 Seats (Square Style:W1800mm x D900mm)
- Room 103 A 16 Seats (Island Style:W1500mm x D600mm)
- Room 103 B 12 Seats (Island Style:W1800mm x D900mm)
- Room 104 A 16 Seats (Square Style:W1800mm x D900mm)
- Room 104 B 16 Seats (Square Style:W1800mm x D900mm)



 KYOTO INTERNATIONAL CONFERENCE CENTER 公益財団法人 国立京都国際会館	承認 Approved	作成日 Date	尺度 Scale	図面番号 No.	図面名 TITLE
	照査 Checked	作成者 Draw	/		