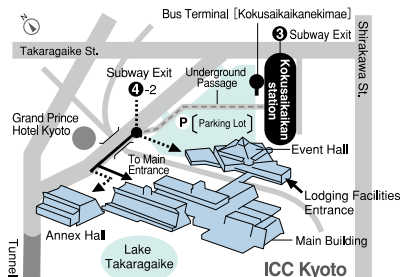
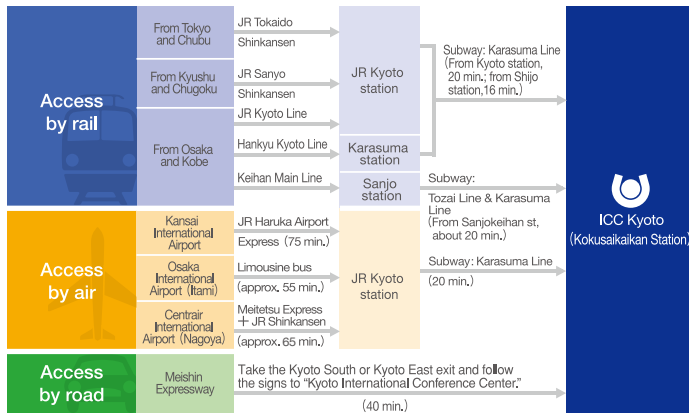
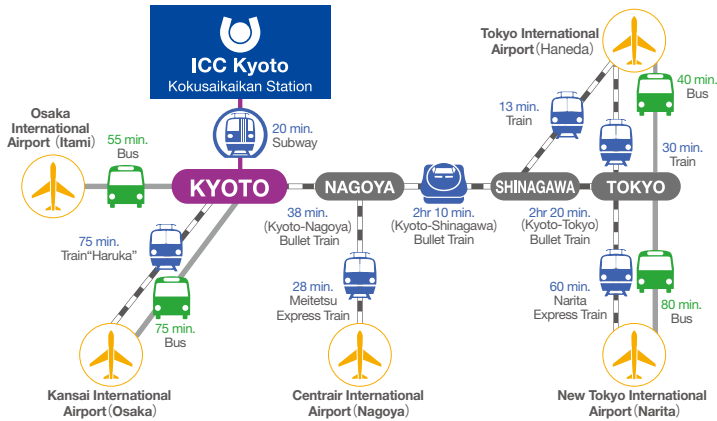


# Access and Kyoto City Map

## Easy International Access

Located on the main Shinkansen (Bullet Train) Line, Kyoto is directly accessible from NARITA (Tokyo), HANEDA (Tokyo), Centrair (Nagoya) and KANSAI (Osaka) International Airports.



Five minutes walk from Kokusaikaikan station. (Exit ④-2)

About 30 minutes by taxi from JR Kyoto station.

## Kyoto International Conference Center

Takaragaike, Sakyo-ku, Kyoto, 606-0001, JAPAN  
Phone: +81-75-705-1229 Fax: +81-75-705-1100  
<http://www.icckyoto.or.jp/> e-mail: ask@icckyoto.or.jp

# Kyoto International Conference Center



20-minute subway ride from Kyoto Station

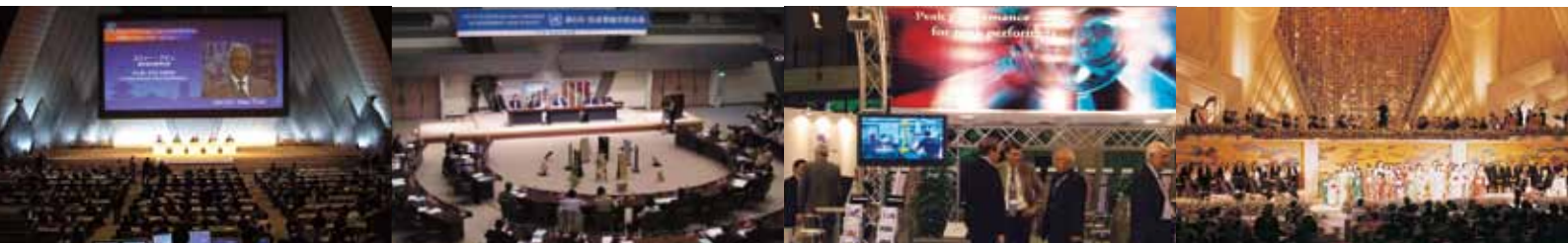
# Kyoto International Conference Center

*A complex dedicated to conferences  
of the highest international standard  
nestled quietly near the clear waters of Lake Takaragaike  
at the base of Mt. Hiei in the north of Kyoto.*

Kyoto International Conference Center (ICC Kyoto), located in Japan's world-acclaimed cultural capital, has shaped the history of conventions in the country since it opened as Japan's first purpose-built international conference center.

ICC Kyoto occupies an expansive 156,000m<sup>2</sup> site containing the Main Building, Annex Hall, Event Hall and a Japanese garden, as well as parking spaces and a complex shared with the adjoining hotel that is devoted exclusively to conferences.

In 2015 it reopens following seismic retrofitting and renovation, its world-class facilities brought up to a new level of uncompromising excellence. Blending state-of-the-art facilities with the time-honored spirit of hospitality, ICC Kyoto continues offering the finest service to guests from around the world.





# Guide to Facilities

ICC Kyoto boasts more than 70 conference rooms including nine halls with simultaneous interpretation equipment. The Main Building, Annex Hall and Event Hall are connected by indoor passageways and linked by a digital network system comprising more than 600 fiber-optic cables. This network makes live video relay easy thereby enabling large-scale conferences of more than 7,000 people.



Main Hall

Renovation for 2015



Room A

Renovation in 2014



Room B-1

Renovation in 2013



Annex Hall

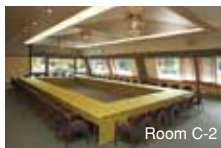


Event Hall



Room B-2

Renovation in 2013



Room C-2



Room D

Renovation in 2014

# Environment Created for conventions



Spacious lobbies and lounges, extensive and freely accessible Japanese gardens offer a pleasant environment to conduct your meeting in. The opportunity to relax between meetings or to engage in informal conversations is an essential part of a successful conference.

# Total Support

Dedicated coordinators take care of all the services necessary for holding conferences

Our highly competent and internationally minded in-house staff provides comprehensive support for events, from promotion of candidacy, to planning and proposals, to attracting participants and management of the conference itself. To handle any and all conference needs, ICC Kyoto features an experienced team of technical specialists, a dedicated catering section, and a conference support staff of 200 available to meet English and other language needs.

The result being a very cost-efficient, stress-free convention for organizers and meeting planners.

- Arranging audiovisual equipment
- Arranging network and communications equipment
- Arranging office equipment
- Signboards and decorative accessories
- Convention support services
- Catering
- Arranging decorative flowers
- Japanese culture program
- Special security arrangements
- Special cleaning arrangements
- Cloakroom
- Business Center
- Gift shop
- Travel agent counter
- Foreign currency exchange
- Lodging facility

## Multimedia Center

This is the control room for audio and video equipment, where the cameras and audio of the main conference rooms are centrally controlled. All rooms are linked to the Multimedia Center via a fiber-optic network, which readily enables live video relay.



## Network System

ICC Kyoto's network system consists of six independent LANs linked by Gigabit Ethernet. This readily facilitates advanced networked conferences and distribution of high-capacity data. The Internet can also be accessed via free Wi-Fi available in the first- and second-floor lobbies.



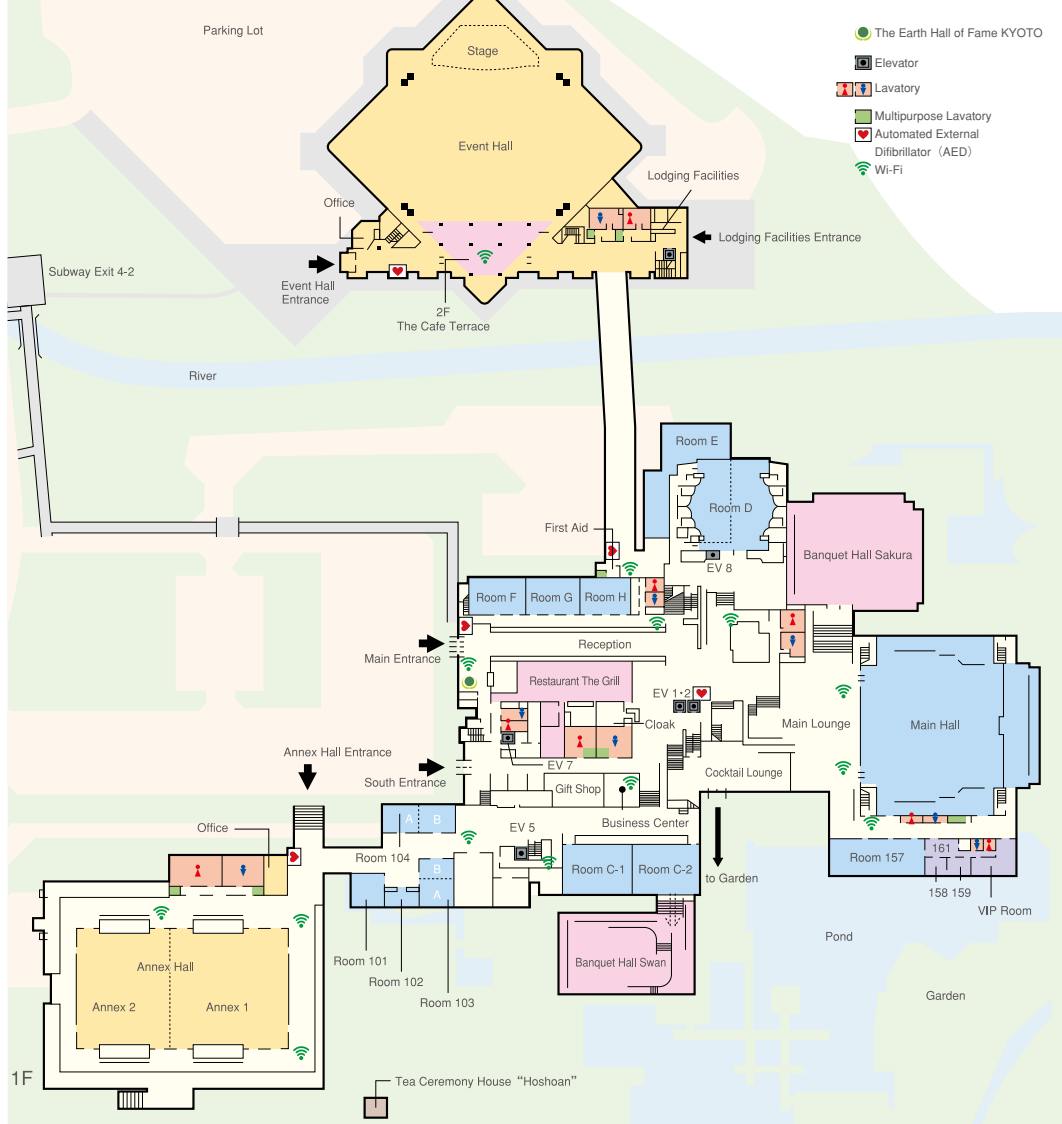
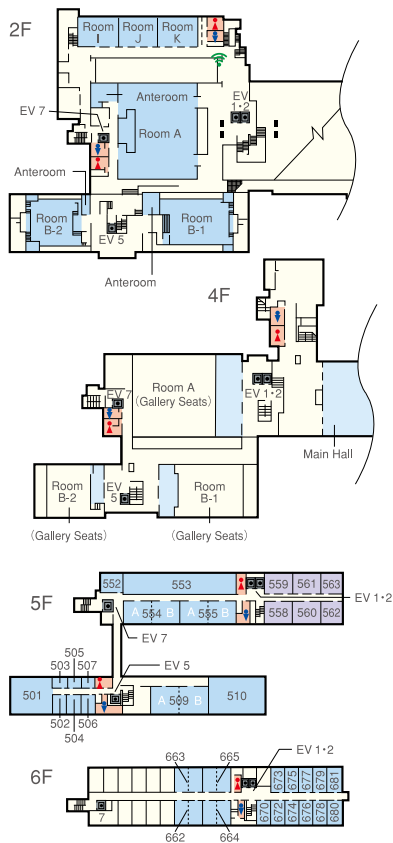
## Convention Support Service

Convention Support Service coordinates all the human resources necessary for conventions; such as reception, computer support, announcements, cloakroom, information services, and secretariat assistance.

## Catering

Our catering service prepares meals to meet the varied requirements of guests and organizers; everything from coffee breaks, to lunches, receptions and banquets.

# Capacities and Floor Plans



Room	Floor	Area (ft <sup>2</sup> )	Ceiling height (m)	Seating Capacity		
				School Style	Theater Style	Layout Sample (Gallery Seats)
Main Hall	1	21,959	15.0			Fixed Seating 1,846
Room A	2	10,226	9.0	250~280	480~550	Horseshoe Style 370+ (222)
Room B-1	2	5,059	6.0	120~150	210~250	Oval Style 100+ (69)
Room B-2	2	3,767	6.0	72~84	110~160	Circular Style 76+ (43)
Room C-1/C-2	1	2,153 each	3.0	50~64	100~140	Square Style 42
Room D	1	4,962	9.0	120~150	210~260	School Style 128
Room E	G	4,909	3.5	110~140	200~300	Theater Style 237
Room F-K	1-2	1,192 each	3.5	40~50	60~90	Square Style 32
Room 101-104	1	270,1075	2.6			Square Style 10-32
Room 157	1	2,368	2.6	60~80	140~160	10 tables, 50 chairs
Room 158/159	1	323	2.6			Sofa Settee
Room 501	5	1,453	2.6	50	90	13 tables, 60 chairs
Room 502/504/506	5	270	2.6			1 table, 4 chairs, Sofa
Room 503/505/507	5	130	2.6			

Room	Floor	Area (ft <sup>2</sup> )	Ceiling height (m)	Seating Capacity		
				School Style	Theater Style	Layout Sample (Gallery Seats)
Room 509	5	1,453	2.6	50	90	
Room 510	5	1,938	2.6	70	120	17 tables, 60 chairs
Room 552	5	430	3.0			Square Style 16
Room 553	5	2,153	3.0	100	154~200	
Room 554/555	5	1,077 each	3.0	50	77~100	Square Style 32
Room 558-563	5	430-538	3.0			Sofa Settee
Room 662-681	6	323/646	2.8			2 tables, 8 chairs / 4 tables, 16 chairs
Annex Hall	1	16,146	10.0	600~700	1,200~1,500	Banquet 650, Reception 1,000
Event Hall	1	32,293	8.2-19.2	1,000~1,200	2,000~2,500	Banquet 1,300, Reception 2,000
Banquet Hall Sakura	1	8,665	3.5-4.5	(300)	(700)	Banquet 380, Reception 500
Banquet Hall Swan	1	5,813	3.3	(100)	(280)	Banquet 200, Reception 300
"Hoshooan" Tea House	Garden	1,302				
Lodging Facilities	2-3	215-291				30 rooms